

4-38

Repeater Tower

Green Tower

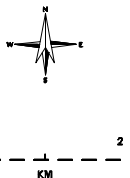
Revelstoke Area Snowmobile Closures

**Sale Mountain
Snowmobile Closure**

(Closure No. 7-4)

Closure Dates from January 1 to April 15 Inclusive

- Legend**
- Legal Access Trail - 20 m width
 - Access Route
 - Open Area (where there are snowmobiling opportunities within designated closure areas)
 - Monashee/Selkirk Mtns Elevation Closure (7-2) - (1300 - 2100 m)
 - Closure Areas: Keystone/Standard (7-5), Sale (7-4) or Caribou Basin (7-6) (Access to Caribou Basin is Only Permitted on Weekends & BC Statutory Holidays)
 - Frisby Ridge Agreement Snowmobile Closure
 - Cut Blocks (may not be upto date in some areas)
 - Wildlife Management Unit
 - Parks
 - Height of Land within Selected Areas
 - Cabin
 - Repeater Tower
 - Points of Interest/Landmarks



MOUNT REVELSTOKE NATIONAL PARK

Main Parking Area

Map Projection : BC Albers; Datum : NAD 83
 Map Produced by Integrated Land Management Bureau, Kootenay Contact Centre - December 22, 2008
 file:///C:/Users/robert/My Documents/Work/Projects/Revelstoke/Revelstoke_Sale_Poster/Revelstoke_Sale_Poster_081222.rtf